

62.09

CAMELLIAS  
for  
1955

LIBRARY  
RECEIVED  
★ NOV 29 1954 ★  
U. S. Department of Agriculture

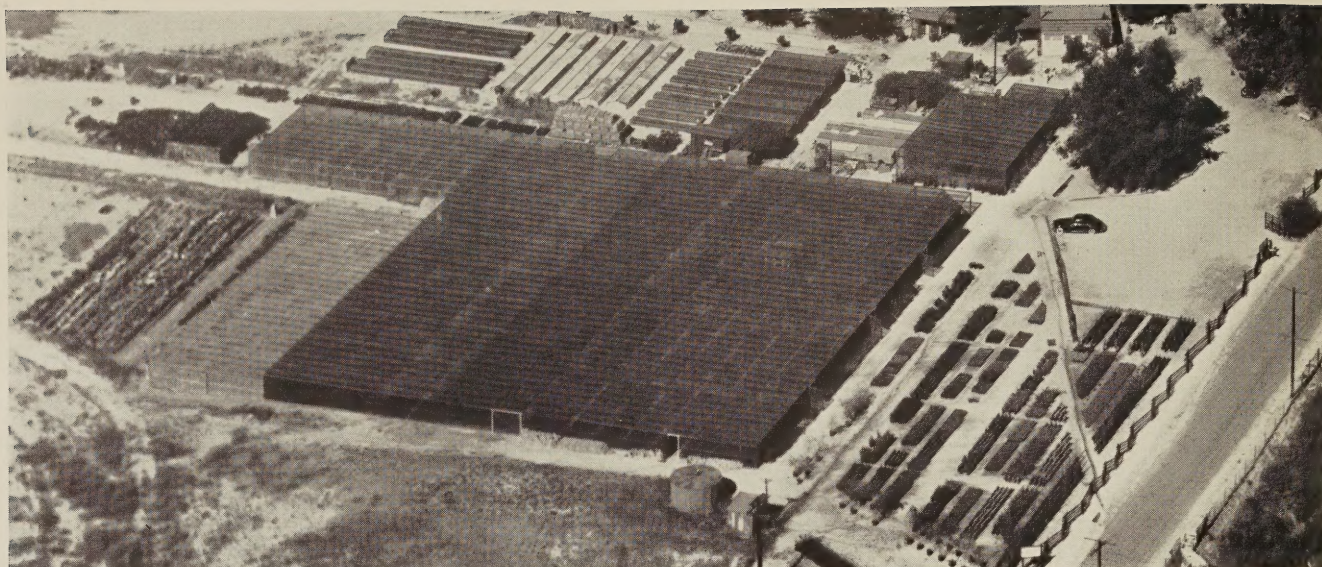


The New White Camellia  
THOMAS D. PITTS

*Nuccio's  
nurseries*

Altadena, Calif.





AERIAL VIEW OF NUCCIO'S NURSERIES

## WELCOME VISITORS!

Most of our customers come to us through the United States mail, but we enjoy having visitors stop in to see us, and we cordially invite you to do so whenever you can. We are open daily **except Wednesday**, and business hours are from 8:00 to 5:00. During the period from June 1 through September 15 we are also closed on Sundays.

## TERMS OF SALE

Please send your remittance with your order. California customers add 3% sales tax to the total. Prices in this catalog are subject to change without notice, and are all F.O.B. Altadena, California. Please specify the way you wish to have us make shipment (parcel post, express, motor freight, railroad freight or air freight). When no instructions are given we will ship via Railway Express. We make no crating charge on orders over \$20.00, but if **your order amounts to less than \$20.00, please add \$1.00 for the first plant and 25c for each additional plant ordered** in order to cover crating costs.

## GUARANTEE

We guarantee all plants to be true to name, to be well grown, and properly packed for shipment. Shortages, damages or losses should be reported to the transportation agency immediately on arrival, and if you will notify us, we will give you all the assistance we can. At no time will we be responsible for more than the purchase price.

## PLEASE READ BEFORE ORDERING

All of our Camellias are container grown (1-gal., 3-gal., 5-gal. and 6-gal.) and will be shipped in their containers. Handled this way Camellias can be shipped and planted every month of the year.

We propagate over 650 varieties of Camellias, many of which are too rare to be in the catalog list. Information desired on varieties not listed will be supplied on request.

We also have large, specimen plants of many varieties, and we will quote prices for these on request.

Notice to residents of the states of Alabama, Florida, Louisiana, Mississippi, North Carolina, South Carolina and Tennessee. All shipments of Camellias into these states will be bare-rooted, reballed in peat moss, burlapped and wrapped in waterproof paper. We are experienced in shipping bare-rooted Camellias and have found the above method so successful that we are giving the same guarantee we give our container grown Camellias. We have successfully shipped bare-rooted Camellias all months of the year, but for best results we advise shipment from mid-September through May.

## NEW VARIETIES

Our breeding and testing program evaluates each year literally hundreds of new varieties of camellias, both of our own and other breeders' origin. To our already very large list of varieties we have added 26 more this year, dropping some which have become displaced by superior new strains.

# How to Grow Fine Camellias

## Where and How to Plant

Even though Camellias can and are being successfully grown in full sun, the best exposure is filtered shade (trees, lath, etc.), morning, or afternoon sun. If planting a Camellia in full sun, it should be done in the winter months in order to allow the plant to become acclimated before summer heat.

Dig a hole at least twice as deep and twice as big around as the size of the container or ball of the plant. Add  $\frac{1}{3}$  peat moss or leaf mold to soil taken from hole and mix thoroughly. If soil is heavy (clay or adobe) use at least 50% peat moss or leaf mold. Fill the hole with sufficient amount of mixed soil so that after firming, the top of the plant ball will set at least one inch above the surrounding area. **NEVER PLANT TOO DEEP.** After setting plant in hole, fill with the mixed soil and pack firmly. Make a basin around the plant and give it a thorough watering to settle soil. Place about one inch of peat moss in basin for mulch.

## Watering

Do not allow plants to become dry, and more important, never keep soil soggy wet. Either condition can cause buds to drop or loss of plant. Always bear in mind that a Camellia likes to be kept reasonably moist, but also requires good drainage.

## Fertilizing

Camellias should be fertilized during the summer growing months, starting as early as March and not later than August. Three feedings in this period are sufficient, i.e., April, June and August. Space feedings at least 30 days apart. Any of the better known acid fertilizers may be used, preferably cottonseed meal. For amount follow directions on package. **NEVER OVER-FERTILIZE.**



# NUCCIO'S *Supreme Quality* CAMELLIAS

| VARIETY  | SIZES   |         |         |          |
|--|---------|---------|---------|----------|
|  | 12"-18" | 18"-24" | 24"-30" | 30"-36"  |
| <b>ADOLPHE AUDUSSON</b> —Large, heavy petaled semi-double, deep red. Upright, compact growth. M.   | 3.00    | 4.00    | \$7.50* | \$10.00* |
| <b>ADOLPHE AUDUSSON VAR</b> (Special)—Heavily mottled white form of Adolphe Audusson. M.   | 4.00*   | 5.00*   | 7.50*   | 10.00*   |
| <b>ALBA PLENA</b> —Still one of the best of the pure white formal doubles showing no stamens. Medium, bushy growth. E-M.   | 2.50    | 3.50    | 6.00    | 7.50     |
| <b>AN-FLO-LEE</b> —Very large, dark red peony to anemone form. Vigorous, upright growth. M.  | 6.00*   | ....    | ....    | ....     |
| <b>ANITA</b> —Light pink, striped carmine. Medium to large, semi-double. Tall compact growth. M.   | 2.00    | 3.00    | 5.00    | 6.50     |
| <b>ANN MILLER</b> —New. Large, semi-double to double, pale pink. Vigorous, compact growth. M-L.  | 5.00*   | 6.50*   | ....    | ....     |
| <b>APPLE BOSSOM</b> (Salunensis)—Single pink and white. Small. Vigorous, open growth. E-M.   | 2.00    | 3.00    | ....    | ....     |
| <b>ARAJISHI</b> (Aloha)—Salmon-red to deep crimson red. Very early bloomer. Large peony type. Vigorous, upright, open growth. E.                                     | 2.00    | 3.00    | 5.00    | 6.50     |
| <b>ARRABELLA</b> —Orange-red. Resembles Reticulata in form. Large, semi-double. Upright, compact growth. M.  | 5.00*   | 6.50*   | 7.50*   | 10.00*   |
| <b>ASPACIA</b> —Variegated form of Emperor of Russia. Crimson spotted with white. Slow, compact growth. M.   | 2.00    | 3.00    | 5.00    | ....     |
| <b>BEAU HARP</b> —Very large, irregular semi-double, brilliant rose-red. Vigorous, upright growth. E-M.  | 6.00*   | 7.50*   | 10.00*  | ....     |
| <b>BELLA ROMANA</b> —Light pink, striped crimson. Medium-large, double. Medium, bushy growth. M.   | 2.00    | 3.00    | 5.00    | 6.50     |
| <b>BERENICE BODDY</b> (U.S. Pat. No. 605)—Light pink with deeper pink under petals, shading to a blush center. Medium-large, semi-double. Vigorous, loose growth. M. | 3.50*   | 4.50*   | 6.50*   | 8.50*    |
| <b>BESSIE MORSE BELLINGRATH</b> —White with faint blush of pink. Large, semi-double. Extremely slow, compact growth. L.  | 5.00*   | 7.50*   | 10.00*  | ....     |

## SPECIAL BONUS OFFER

When our customers send us a nice order we like to show our appreciation by shipping extra camellias. But so many times we are uncertain what to send because the variety we select may be one already a part of your collection. So we are making this special bonus offer in order to give you an opportunity to select the extra plants yourself. There are no restrictions on varieties—you may choose any kind in this catalog according to the following schedule:

If your order amounts to **\$20.00** or more, select any \$2.50 camellia free of additional charge.

If your order amounts to **\$40.00** or more, select any camellias totaling \$5.00 in value.

If your order amounts to **\$60.00** or more, select any camellias totaling \$7.50 in value.

If your order amounts to **\$80.00** or more, select any camellias totaling \$10.00 in value.

Larger orders earn bonus plants according to the same ratio

| VARIETY  | SIZES   |         |         |         |
|--|---------|---------|---------|---------|
|  | 12"-18" | 18"-24" | 24"-30" | 30"-36" |
| <b>BETTY McCASKILL</b> (Maliflora)—Small semi-double to full double pale pink, margined rose-pink. Vigorous, slender, upright growth with small foliage. M-L.  | 6.00*   | ....    | ....    | .....   |
| <b>BETTY SHEFFIELD</b> —Large white, variegated red and pink, semi-double to loose peony form. Medium, compact growth. M.  | 6.00*   | ....    | ....    | .....   |
| <b>BETTY THEISEN</b> —A beautiful large, loose, semi-double, pale pink shading to deeper pink in center. Medium, bushy growth. M-L.  | 4.00*   | 5.00*   | 7.50*   | .....   |
| <b>BIG BEAUTY</b> —White, blotched and spotted with pink. Large, semi-double to loose peony form. Vigorous, bushy growth. M-L.   | 4.00*   | 5.00*   | 7.50*   | .....   |
| <b>BLOOD OF CHINA</b> —Deep salmon-red. Large semi-double to loose peony form. Late bloomer. Vigorous, upright, compact. L.  | 2.00    | 3.00    | 5.00    | 6.50    |
| <b>BLUSH HIBISCUS</b> —White with blush-pink center. Very large single to semi-double. Upright, spreading growth. M.   | 4.00*   | 5.00*   | 7.50*   | 10.00*  |
| <b>BLUSH PLENA</b> —Beautiful new sport of Alba Plena. Flowers are blush-pink when first open, fading to white after several days. Foliage, growing habit and blooming season same as Alba Plena.  | 7.50*   | ....    | ....    | .....   |
| <b>BRIDE'S BOUQUET</b> (Harvey Short Seedling)—A very large white semi-double with fluted and notched petals. Medium, open growth. Extremely long blooming season. M-L.  | 10.00*  | ....    | ....    | .....   |
| <b>CALIFORNIA</b> —Rose-red, golden stamens, with unusually large petals. Very large, semi-double. Medium, upright, compact. M.  | 2.50    | 3.50    | 6.00    | .....   |
| <b>CAROLYN TUTTLE</b> —New. Rose-opal, full peony flower similar to Debutante in form, but deeper in color. Sturdy, long-lasting blooms ranging in size from 3½ to 4 inches and larger. Glossy, crinkled, pointed foliage; sturdy, compact, upright plants. M. | 7.50*   | ....    | 12.50*  | 17.50*  |
| <b>CATHERINE McCOWAN</b> —New. Light pink. Sport of Eleanor McCowan. Loose, upright growth. M.   | 5.00*   | 6.50*   | ....    | .....   |
| <b>CHANDLERI ELEGANS PINK</b> (Francine)—Rose-pink. Large anemone form. Medium, spreading growth. E-M.   | 2.50    | 3.50    | 6.00    | 7.50    |
| <b>CHANDLERI ELEGANS VAR.</b> —Rose-pink mottled with white. Large anemone form. Medium, spreading growth. E-M.  | 2.50    | 3.50    | 6.00    | 7.50    |
| <b>CHARLOTTE BRADFORD</b> —A beautiful silvery pink, variegated white sport of Thelma Dale. M.   | 6.00*   | ....    | ....    | .....   |
| <b>CHO-CHO-SAN</b> —New. Pale pink, golden stamens. Large, semi-double. Slow, upright, compact growth. M.  | 4.00*   | 5.00*   | 7.50*   | .....   |
| <b>CHOYO-NO-NISHIKI</b> —Large, semi-double variegated. Vividly striped rose-red on pink background. Slow, compact growth. E-M.  | 5.00*   | ....    | ....    | .....   |
| <b>CLARA GREEN</b> —A very lovely, large anemone form. Brilliant rose-pink. Upright, compact growth. M.  | 5.00*   | ....    | ....    | .....   |
| <b>CLARA G. MYRICK</b> —Medium to large formal to rose form double, deep rose pink. Medium, compact growth. M.   | 6.00*   | ....    | ....    | .....   |
| <b>CLEOPATRA</b> —Pink, marbled with white. Large, full peony form. Vigorous, loose, upright growth. M.  | 2.50    | 3.50    | 6.00    | 7.50    |
| <b>C. M. HOVEY</b> (Col. Firey)—Brilliant, deep red. Large, full double, imbricated. Medium, loose, upright growth. L.   | 2.50    | 3.50    | 6.00    | 7.50    |
| <b>C. M. WILSON</b> —New. Pale pink sport of Chandleri Elegans. Outstanding. Medium, spreading growth. E-M.  | 4.00*   | 5.00*   | 7.50*   | 10.00*  |
| <b>CONFLAGRATION</b> —Fire-red. Large, semi-double. Vigorous, slender, upright growth. M-L.  | 4.00*   | 5.00*   | 7.50*   | .....   |



| VARIETY  | SIZES   |         |         |         |
|--|---------|---------|---------|---------|
|  | 12"-18" | 18"-24" | 24"-30" | 30"-36" |
| <b>COLLETTII</b> (Collettii Maculata)—Brilliant dark red, blotched with white. Medium, peony form. Slow, bushy growth. E-M.  | 4.00*   | 5.00*   | 7.50*   | .....   |
| <b>CORNUS FLORA</b> —Medium single, light pink, shaded deeper pink. Resembles Pink Dogwood. Medium, upright, compact growth. M.  | 4.00*   | 5.00*   | 7.50*   | .....   |
| <b>COVINA</b> —Rose-red. Medium, semi-double. Excellent landscape variety. Medium, bushy growth. M.  | 1.50    | 2.50    | 4.50    | 6.00    |
| <b>CRUSADER</b> —Deep red. Very large semi-peony form to rose form double. Vigorous, compact growth. M.  | 4.00*   | 5.00*   | 7.50*   | 10.00*  |
| <b>DAIKAGURA RED</b> —Bright rose-pink. Early. Very large peony form. Slow, compact growth. E-L.   | 2.00    | 3.00    | 5.00    | 6.50    |
| <b>DAIKAGURA VAR.</b> —Bright rose-pink, splotted with white. Early. Very large peony form. Slow, compact growth. E-L.   | 2.00    | 3.00    | 5.00    | 6.50    |
| <b>DAINTY</b> —Blush-white, striped with pink. Heavily fringed petals. Semi-double. Sport of Tricolor Sieboldi. Upright, compact. M-L.   | 4.00*   | ....    | ....    | .....   |
| <b>DAITERIN</b> —Light rose pink. Very large single with mass of blush-white petaloids in center. Vigorous, upright growth. E-M.   | 5.00*   | 6.50*   | 7.50*   | .....   |
| <b>DAVE STROTHER</b> —Beautiful, large blush pink, loose anemone to peony form. Vigorous, upright growth. M-L.   | 5.00*   | ....    | ....    | .....   |
| <b>DEBUTANTE</b> —Soft pink. Large, full peony form. Vigorous, loose, upright growth. E-M.   | 2.50    | 3.50    | 6.00    | 7.50    |
| <b>DESSA THOMPSON</b> —New. Medium to large, white, full peony form, extremely early. Compact, upright growth. E-L.  | 7.50*   | ....    | ....    | .....   |
| <b>DONATION</b> —The finest of the Saluenensis x Japonica hybrids. Deep pink, large semi-double. Prolific bloomer. Medium, upright growth. M.  | 10.00*  | ....    | ....    | .....   |
| <b>DONCKELARI</b> (Southern)—Red, sometimes marbled white. Very large, semi-double with golden stamens. Slow bushy growth. M.  | 2.50    | 3.50    | 7.50    | .....   |
| <b>DONCKELARI</b> —Same as Donckelari (Southern) with the exception that our parent plant blooms heavily marbled white. M.   | 5.00*   | 6.50*   | 7.50*   | 10.00*  |
| <b>DOROTHY MAC</b> —This Chandleri seedling is identical to its parent but pure white in color and not as large a bloom. Medium, bushy growth. M.  | 2.50    | 3.50    | 6.00    | .....   |
| <b>DR. H. G. MEALING</b> —A very large blood-red semi-double. Vigorous, open growth. L.  | 6.00*   | ....    | ....    | .....   |
| <b>DR. JOHN D. BELL</b> —Dark red, heavily variegated white form of Beau Harp. Vigorous. Upright growth. E-M.  | 6.00*   | 7.50*   | ....    | .....   |
| <b>DR. SHEPHERD</b> (Te Deum)—Dark red. Very large, from semi-double to full peony to formal double. Medium, open growth. M-L.   | 4.00*   | 5.00*   | 7.50*   | 10.00*  |
| <b>DR. TINSLEY</b> —New. Large, flesh pink, semi-double to peony. Outstanding. Upright, compact growth. M.   | 7.50*   | ....    | ....    | .....   |
| <b>DRAMA GIRL</b> —This outstanding new camellia, developed by "Doc" Miller of San Diego, is being offered for the first time. Its very large blossoms, 5½"-6½", are large petaled, semi-double, deep salmon rose pink with prominent stamens. Vigorous, upright open growth, with extremely large, dark green foliage. Blooming season from December through April. | 12.50*  | ....    | ....    | .....   |





ADOLPH AUDUSSON VAR.



MATHOTIANA (Julia Drayton)

### VARIETY

- DUNCAN BELL**—Brilliant red. Very large anemone form. Vigorous, upright, open growth. M.
- ECLATANTE**—Deep pink, large, semi-double. Vigorous, upright, compact growth. M.
- EDDIE G. WHEELER**—Very large light pink, semi-double, with prominent stamens. Medium, upright growth. M.
- EDWIN FOLK**—New. Bright red. Very large, loose semi-double. Medium, upright growth. M-L.
- ELEANOR HAGOOD**—Pale pink. Medium, formal very double. Vigorous, upright, bushy growth. L.
- ELEANOR HAGOOD VAR.**—Pale pink, mottled with white. Medium, formal very double. Vigorous, upright, bushy growth. L.
- ELEANOR OF FAIROAKS**—Ruby-red, marbled with white. Large, semi-double to peony form. Variegated Vedrine. Vigorous, upright, spreading growth. E-M.
- ELENA NOBILE**—Bright flame-red. Medium, formal double, showing stamens when fully opened. Medium, upright growth. L.
- ELIZABETH BOARDMAN**—White. Very large semi-double with large twisted petals. Medium, upright, compact growth. M.

**ELIZABETH LE BEY**—This outstanding new camellia is a must in every collection. The rich pink blossoms are very large, hemispherical, semi-double to loose peony form. Vigorous, pendulous growth.

### SIZES

| 12"-18" | 18"-24" | 24"-30" | 30"-36" |
|---------|---------|---------|---------|
| 2.50    | 3.50    | 6.00    | 7.50    |
| 7.50*   | ....    | ....    | ....    |
| 6.00*   | ....    | ....    | ....    |
| 4.00*   | 5.00*   | 7.50*   | ....    |
| 4.00*   | 5.00*   | 7.50*   | 10.00*  |
| 4.00*   | ....    | ....    | ....    |
| 2.50    | 3.50    | 6.50*   | 7.50*   |
| 2.00    | 3.00    | 5.00    | 6.50    |
| 2.50    | 3.50    | 6.00    | 7.50*   |
| 7.50*   | 10.00*  | ....    | ....    |



# VARIETY

# SIZES

|   | 12"-18" | 18"-24" | 24"-30" | 30"-36" |
|---|---------|---------|---------|---------|
| <b>EMMA</b> —Large, light pink. Rose form to peony form. Very lovely. Slow, spreading growth. M.  | 5.00*   | 6.50*   | 7.50*   | .....   |
| <b>EMMETT PFINGSTL</b> —Beautiful red and white variegated form of Joseph Pfingstl. An excellent camellia. Vigorous, upright growth. E-M.                           | 10.00*  | ....    | ....    | ....    |
| <b>EMPEROR OF RUSSIA</b> —Scarlet. Large, double to peony form. Slow, compact growth. M.  | 2.00    | 3.00    | 5.00    | 6.50    |
| <b>EUGENE LIZZIE</b> (Lady Jane Gray)—Rose-pink, marbled with white. Large, semi-double to peony form. Slow, compact growth. M-L.                                   | 4.00*   | 5.00*   | 7.50*   | .....   |
| <b>F. G. No. 2</b> —Brilliant red heavily blotched with white. Large, semi-double. Slow, compact growth. Believed to be the same as Iwane Shibori. M.               | 5.00*   | 7.50*   | 10.00*  | .....   |
| <b>FIMBRIATA</b> —Resembles Alba Plena with the exception of the petals which are beautifully fringed. Medium, bushy growth. E-M.                                   | 2.50    | 3.50    | 6.00    | 7.50    |
| <b>FINLANDIA</b> — White. Large, semi-double with fluted petals. Medium, bushy, compact. M.   | 2.00    | 3.00    | 5.00    | 6.50    |
| <b>FINLANDIA VAR.</b> —White, streaked and speckled red form of Finlandia. Medium, bushy, compact. M.   | 2.00    | 3.00    | 5.00    | 6.50    |
| <b>FIREBRAND VAR.</b> —Scarlet-red, heavily spotted with white. Large, semi-double. Upright, bushy growth. M.   | 4.00*   | 5.00*   | ....    | .....   |
| <b>FIRST FLUSH</b> (Hybrid Salunensis x Japonica)—Small, single, delicate pink. Profuse bloomer. Valuable as landscape material. Vigorous, open, upright growth. M. | 5.00*   | 6.50*   | 7.50*   | 10.00*  |
| <b>FLAME</b> —Flame-red. Very large, semi-double. Large petals. Medium, upright growth. M.  | 2.50    | 3.50    | 6.00    | .....   |
| <b>FLAME VAR.</b> —Flame-red, mottled with white. Variegated form of Flame.   | 4.00*   | 5.00*   | 7.50*   | .....   |
| <b>FLAMINGO</b> —Beautiful, large, light pink. Single to semi-double. Vigorous, upright growth. M.  | 4.00*   | 5.00*   | ....    | .....   |



VILLE DE NANTES VAR.



CHANDLERI ELEGANS VAR.



| VARIETY   | SIZES   |         |         |         |
|---|---------|---------|---------|---------|
|   | 12"-18" | 18"-24" | 24"-30" | 30"-36" |
| <b>FLOWERWOOD</b> (U.S. Pat. No. 1074)—Flower form and color identical to Mathotiana but all petals are sharply fimbriated. Outstanding. Vigorous, bushy growth. M-L.   | 6.00*   | 7.50*   | 10.00*  | .....   |
| <b>FRANK GIBSON</b> —This outstanding new camellia, with its striking color and unusual form, has caused much comment wherever shown. A large, anemone form, consisting of a single row of white petals and a center of numerous golden petaloids and stamens. Medium, bushy growth. E-M. | 6.00*   | ....    | ....    | .....   |
| <b>FRED SANDER</b> —Crimson-red. Medium size, semi-double with curled and heavily fimbriated petals. Vigorous, upright, compact growth. M-L.  | 2.50    | 3.50    | 7.50*   | 10.00*  |
| <b>FRENCH IMPERATOR</b> —Very large full peony form. Extremely dark red. Medium, upright, open growth. M.   | 4.00*   | ....    | ....    | .....   |
| <b>FRIZZLE WHITE</b> —White. Very large, semi-double, with wavy petals intermixed with stamens. Vigorous, bushy growth. M.  | 2.50    | 3.50    | 6.00    | 7.50    |
| <b>FROSTY MORN</b> —A very large white anemone to peony form with beautiful long, narrow, slightly twisted foliage. Medium, open, upright growth. M-L.  | 12.50*  | 17.50*  | 20.00*  | .....   |
| <b>GEN. DWIGHT EISENHOWER</b> —Deep red. Large peony to anemone form. Vigorous, upright, compact growth. M-L.   | 2.50    | 3.50    | 6.00    | 7.50    |
| <b>GEN. GEO. PATTON</b> —Bright pink. Large, formal double showing stamens. Vigorous, upright, open growth. M-L.  | 2.50    | 3.50    | 6.00    | 7.50    |
| <b>GIGANTEA</b> (Emperor Wilhelm)—Brilliant red, marbled with white. Very large, semi-double to peony form. Vigorous, upright, open growth. M.  | 2.50    | 3.50    | 7.50*   | 10.00*  |
| <b>GEN 40</b> —Deep orange-red. Large, full formal double. Slow, compact growth. M-L.   | 2.50    | 5.00*   | 7.50*   | 10.00*  |
| <b>GLEN 40 VAR.</b> —Deep orange-red, mottled with white. Slow, compact growth. M-L.  | 4.00*   | ....    | ....    | .....   |
| <b>GOSHOGURUMA</b> —Deep red, occasionally spotted with white. Large, semi-double to peony form. Medium, upright compact. M.  | 3.00    | 4.00    | 7.50    | .....   |
| <b>GOV. EARL WARREN</b> —Deep, rich pink. Very large, semi-double with some of the center petals having an irregular twist. Vigorous, bushy, open growth. M.  | 2.50    | 3.50    | 6.00    | 7.50    |
| <b>HAKU RAKUTEN</b> —White. Large, semi-double to peony form. Medium, upright growth. M.  | 4.00*   | 5.00*   | ....    | .....   |
| <b>HELEN K</b> —Medium to large peony form, with unusual color toning of pale pink center to deeper lavender pink toward edges. Vigorous, compact growth. E-M.  | 6.00*   | ....    | ....    | .....   |
| <b>HERME</b> (Jordan's Pride)—Pink with white border, streaked rose-pink. Large, semi-double. Vigorous, open, upright. M.   | 1.50    | 2.50    | 5.00    | 6.00    |
| <b>HIGH HAT</b> —Pale pink sport of Daikagura. Slow, compact growth. E-L.   | 2.50    | 5.00*   | 7.50*   | 10.00*  |
| <b>HISHI-KARAITO</b> —Small, bell-shaped, semi-double. Delicate pink. Slow, compact growth. M.  | 5.00*   | ....    | ....    | .....   |
| <b>IMURA</b> —White. Very large, semi-double. Vigorous, bushy, open growth. M.  | 2.00    | 3.00    | 5.00    | 6.00    |
| <b>JAMES ALLAN</b> —Fire-red. Very large, semi-double growth. M.  | 4.00*   | 5.00*   | ....    | .....   |
| <b>JAMES ALLAN VAR.</b> —Fire-red, mottled with white. Medium, open growth. M.  | 4.00*   | 5.00*   | 7.50*   | .....   |



| VARIETY   | SIZES   |         |         |         |
|---|---------|---------|---------|---------|
|   | 12"-18" | 18"-24" | 24"-30" | 30"-36" |
| <b>J. C. WILLIAMS</b> (Hybrid Salunensis x Japonica)—An outstanding new hybrid. Medium sized, light pink, profuse bloomer. Extremely long blooming season. Medium, bushy growth. M-L.   | 7.50*   | ....    | ....    | ....    |
| <b>JESSIE KATZ</b> (U.S. Pat. No. 1107)—An outstanding new variety with large, wavy petals. Semi-double, watermelon pink. We are the exclusive West Coast propagators of this fine new camellia. Medium, bushy growth. M-L.   | 7.50*   | 10.00*  | 12.50*  | ....    |
| <b>J. J. PRINGLE SMITH VAR.</b> —Dark red, heavily marbled with white. Very large, semi-double. Slow, compact growth. M-L.  | 2.50    | 3.50    | 7.50*   | ....    |
| <b>JOSEPH PFINGSTL</b> (Pat. No. 927)—A very large dark red, varying in form from semi-double to full formal. Extremely hardy and vigorous growth with long blooming season. October to April. E-L.   | 10.00*  | ....    | ....    | ....    |
| <b>JOSHUA A. YOUTZ</b> (White Daikagura)—This outstanding camellia was introduced by our nursery in 1950. Its blossoms, which are pure white, fully peony form double, are larger than its parent, the Daikagura. Its foliage, growing habit and early blooms are like its parent, making this variety a truly outstanding camellia. E-L.   | 2.50    | 3.50    | 7.50*   | 10.00*  |
| <b>KATHERINE NUCCIO</b> (N #104)—This seedling first bloomed in 1942 and has proven itself well worthy of propagation because of its long season of bloom (starting as early as December and blooming through March), its lasting qualities as a cut flower, and its color. A 3 to 3½ inch double formal, rose form, consisting of 60-65 large petals. Brilliant rose-red, with edges of petals cupped inward. Foliage, dark green, medium, slightly twisted. Compact growth. | 2.50    | 3.50    | 7.50*   | 10.00*  |
| <b>KENNY</b> —Deep rose-pink, blotched white. Large, semi-double to peony form. Slow, compact growth. L.  | 4.00*   | ....    | ....    | ....    |
| <b>KERLEREC</b> —A very beautiful salmon-pink, medium-large peony to anemone form. Medium, bushy, upright growth. E-M.  | 7.50*   | ....    | ....    | ....    |
| <b>KIMBERLEY</b> —Carmine with red stamens. Medium, single. Profuse bloomer. Vigorous, upright, compact growth. M.  | 2.50    | 3.50    | 6.00    | ....    |
| <b>KING LEAR</b> —Cherry-red, marbled with white. Variegated form of Finlandia. Vigorous, compact growth. M.  | 2.50    | 3.50    | 7.50*   | 10.00*  |
| <b>KUMASAKA</b> —Rose-pink. Large, full double. Upright and compact growth. M-L.  | 2.00    | 3.00    | 5.00    | 6.50    |
| <b>LADY CHARLOTTE</b> —Clear light pink with lighter pink veins. Large, semi-double. Vigorous, upright, compact growth. M.  | 2.50    | 3.50    | 6.00    | 7.50    |
| <b>LADY CLARE</b> —Rose-pink. Very large semi-double. Prominent golden stamens. Vigorous, bushy growth. E-M.  | 2.00    | 3.00    | 5.00    | 6.50    |
| <b>LADY KAY</b> —Fimbriated peony form sport of Ville de Nantes, with growing and blooming season same as parent. Red, mottled white.   | 6.00*   | ....    | ....    | ....    |
| <b>LADY LUCILLE</b> —Very large, full double to peony. Creamy white. Medium, bushy upright. L.  | 4.00*   | 5.00*   | 7.50*   | 10.00*  |
| <b>LADY MARY CROMARTIE</b> —Deep rose-pink. Large petaled, semi-double. Upright, compact growth. M-L.   | 2.50    | 3.50    | ....    | ....    |
| <b>LADY SADIE</b> —White. Large, semi-double with fluted petals that intermix with golden stamens. Medium, upright growth. M.   | 4.00*   | 5.00*   | 7.50    | 10.00*  |
| <b>LALLAROOK</b> (Laurel Leaf)—Pink, marbled with white. Large, full double imbricated. Excellent cut flower. Medium, upright compact. M-L.   | 2.50    | 3.50    | 6.00    | 7.50    |





LADY KAY



GOVERNOR EARL WARREN

### VARIETY

|  | SIZES   |         |         |         |
|--|---------|---------|---------|---------|
|  | 12"-18" | 18"-24" | 24"-30" | 30"-36" |
| <b>LAWRENCE WALKER</b> —Brilliant red. Very large, loose peony form. Upright growth. M.                    | 4.00*   | 5.00*   | 7.50*   | .....   |
| <b>LENA JACKSON</b> —New. Large, blush pink. Formal to semi-double. Medium, slender, upright growth. M.    | 5.00*   | 6.50*   | 7.50*   | 10.00*  |
| <b>LETITIA SCHRADER</b> —Dark, bright red. Very large peony form. Medium compact growth. M.                | 5.00*   | 6.50*   | 7.50*   | .....   |
| <b>LOTUS</b> —White. Very large semi-double, showing prominent stamens. Vigorous, upright, open growth. M. | 2.50    | 3.50    | 6.00    | 7.50    |



POPE PIUS IX



JOSHUA YOUTZ (White Daikagura)



NUCCIO'S NURSERIES  
3555 CHANEY TRAIL, ALTADENA, CALIFORNIA

# Ship to

City \_\_\_\_\_ State \_\_\_\_\_

| Quantity | Variety | Size | Price |
|----------|---------|------|-------|
|----------|---------|------|-------|

[illegible]



[illegible]



[illegible]







C. M. HOVEY (Colonel Firey)



C. M. WILSON

### VARIETY

**LOUISE McCLAY VAR.**—Deep pink blotched with white. Medium, upright, compact growth. M.

**MAGNOLIAFLORA**—Still one of the best of the pale pink semi-doubles. Its very compact, upright growth makes it a handsome shrub. M.

**MAGNOLIA QUEEN**—White with an occasional rose-red blotch and a few light pink stripes. Large, irregular semi-double with flat blossoms. Medium, bushy growth. L.

**MARGARET HERTRICH**—White. Medium large, formal double, consisting of numerous petals. Good cut flower. Vigorous, compact, upright. M.

### SIZES

| 12"-18" | 18"-24" | 24"-30" | 30"-36" |
|---------|---------|---------|---------|
| 5.00*   | 6.50*   | 7.50*   | .....   |
| 4.00*   | 5.00*   | 7.50*   | 10.00*  |
| 4.00*   | 5.00*   | 7.50*   | 10.00*  |
| 3.00    | 4.00    | 7.50    | 10.00   |



DONCKELARI



FINLANDIA VAR.

| VARIETY   | SIZES   |         |         |         |
|---|---------|---------|---------|---------|
|   | 12"-18" | 18"-24" | 24"-30" | 30"-36" |
| <b>MARGARET HIGDON</b> —Rose-red, occasionally showing white margined petals. Large, semi-double. Vigorous, upright, compact. M.  | 2.50    | 3.50    | 6.00    | 7.50    |
| <b>MARGARET WALKER</b> —A beautiful variegated camellia. White, striped with pink. Large, semi-double to rose form double. Medium, upright growth. M-L.   | 4.00*   | ....    | ....    | .....   |
| <b>MARION MITCHELL</b> —A large, semi-double, scarlet-red with occasional petaloids intermixed with stamens. Medium, compact, upright growth. M.  | 2.50    | 3.50    | 6.00    | 7.50    |
| <b>MARJORIE MAGNIFICENT</b> —Pale pink, semi-double to peony form. Medium, compact growth. E-M.   | 5.00*   | 6.50*   | 7.50*   | 10.00*  |
| <b>MARTHA BRICE</b> —Light pink. Large, semi-double to loose peony form. Medium, bushy, spreading. M.   | 3.00    | 4.00    | 7.50*   | 10.00*  |
| <b>MARY CHARLOTTE</b> —Pale pink. Medium to large anemone form. Vigorous, upright, compact. M.  | 2.50    | 5.00*   | 7.50*   | 10.00*  |
| <b>MASTERPIECE</b> —This new seedling, developed by Harvey Short, has proven to be a real "Masterpiece." Its 4½ to 5 inch, pure white, rose form blossoms are deep petaled, cup shaped and 3 inches deep. Foliage unusually large with open, vigorous growth, makes this camellia a very handsome shrub as well as a beautiful flower. Blooming season early midseason. | 7.50*   | 10.00*  | 15.00*  | 20.00*  |
| <b>MASQUERADE</b> (N #404)—Frank Williams Award Winner 1952. A very large semi-double to loose anemone form. White with an occasional fuchsia pink or rose pink marking. Foliage, long, dark green with habit of growth spreading yet very compact. M-L.  | 7.50*   | 10.00*  | ....    | .....   |
| <b>MATHOTIANA</b> (Julia Drayton)—Crimson red. Very large, full double imbricated showing stamens when fully opened. Vigorous, bushy growth. M-L.   | 2.50    | 3.50    | 6.00    | 7.50    |
| <b>MATTIE O'REILLY</b> —Very large, semi-double to peony form with stamens intermixed with rabbit-eared petals. Beautiful shade of coral rose pink. Slow, compact, upright growth. E-M.   | 7.50*   | 10.00*  | ....    | .....   |
| <b>MAX GOODLEY</b> —New. Very large, pale pink, irregular semi-double. Vigorous, open, upright growth. M-L.   | 5.00*   | 6.50*   | ....    | .....   |
| <b>MEREDITH LAKE</b> —Pale lavender-pink. Medium, semi-double. Vigorous, bushy growth. M.   | 2.00    | 3.00    | 5.00    | 6.50    |
| <b>MME. HAHN</b> —Bright pink. Large, semi-double to peony form. Vigorous, upright growth. M.   | 3.00    | 4.00    | 7.50    | 10.00   |
| <b>MME. HOVEY</b> —Pink, fading to a lighter shade of pink at center of blossom. Medium to large, formal double. Medium, upright, compact. M.   | 2.00    | 3.00    | 5.00    | 6.50    |
| <b>MOLLIE MORE DAVIS</b> —A very beautiful, large, deep rose-pink sport of Big Beauty. Outstanding. Vigorous, bushy growth. M-L.  | 5.00*   | 6.50*   | 7.50*   | .....   |
| <b>MONTE CARLO</b> —Beautiful light pink sport of Finlandia. Outstanding. M.  | 7.50*   | ....    | ....    | .....   |
| <b>MORNING GLOW</b> —White. Large. formal double imbricated. Vigorous, upright, compact growth. E-M.  | 4.00*   | 5.00*   | 7.50*   | 10.00*  |
| <b>MT. SHASTA</b> —White. Large, full peony form. Upright, compact growth. M-L.   | 2.50    | 3.50    | 6.00    | 7.50    |
| <b>MRS. BALDWIN WOOD</b> —White with vivid pink stripe on one or more petals. Large, irregular semi-double to rose form. Medium, upright, loose growth. M.  | 4.00*   | 5.00*   | 7.50*   | .....   |
| <b>MRS. BERTHA HARMS</b> —A very large semi-double. Ivory white with blush pink cast. Medium, upright, open growth. M-L.  | 5.00*   | ....    | ....    | .....   |



| VARIETY   | SIZES   |         |         |         |
|---|---------|---------|---------|---------|
|   | 12"-18" | 18"-24" | 24"-30" | 30"-36" |
| <b>MRS. CHARLES COBB</b> —Dark, coppery red. Large, semi-double to loose peony form. Vigorous, bushy, upright. E-M.   | 2.50    | 3.50    | 6.00    | 7.50    |
| <b>MRS. CHAS. SIMMONS</b> —Creamy white. Large, semi-double to loose peony form. Medium, bushy, compact. M-L.   | 2.50    | 3.50    | 6.00    | .....   |
| <b>MRS. CLARK</b> —A very beautiful light pink to white, large peony. Medium, compact growth. M.  | 6.00*   | 7.50*   | 10.00*  | .....   |
| <b>MRS. FREEMAN WEISS</b> —Pink, occasionally mottled with white. Large, semi-double with wavy petals. Vigorous, upright, compact. M.   | 4.00*   | 5.00*   | 7.50*   | 10.00*  |
| <b>MRS. HOWARD ASPER</b> —Light pink. Very large cup shaped, semi-double. Medium, compact growth. M.  | 4.00*   | 5.00*   | 7.50*   | 10.00*  |
| <b>MRS. MARIE KEATING</b> —Light pink. Medium large, semi-double to peony form. Vigorous, compact, upright. M.  | 2.00    | 3.00    | 5.00    | 6.50    |
| <b>MRS. NELLIE EASTMAN</b> —New. Flesh pink, speckled and striped with deep rose. Medium large, full peony form. Very beautiful. Medium, upright, compact. M.   | 5.00*   | 6.50*   | 7.50*   | .....   |
| <b>MRS. SHEPHERDSON</b> —A large white striped with pink. Anemone form. Medium, upright, bushy growth. M.   | 4.00*   | 5.00*   | ....    | .....   |
| <b>MRS. TINGLEY</b> —Light silvery-pink. Medium to large, formal double imbricated. Medium, compact. M-L.   | 2.50    | 3.50    | 7.50*   | 10.00*  |
| <b>MY DARLING</b> —Beautiful, small soft pink. Single. Resembles a poppy. Vigorous, upright, compact. M.  | 4.00*   | ....    | ....    | .....   |
| <b>NAGASAKI</b> —Rose-pink marbled with white. Very large, semi-double. Medium, spreading growth. M.  | 2.00    | 3.00    | 5.00    | 6.50    |
| <b>NINA AVERY</b> —New. Pale pink. Medium to large; semi-double to peony form. Vigorous, upright, compact. M.   | 7.50*   | ....    | ....    | .....   |
| <b>OKI-NO-NAMI</b> —Vivid orange-red. Large, semi-double. Very showy. Medium, upright. M.   | 2.50    | 3.50    | 6.00    | 7.50    |
| <b>ONIJI</b> —Deep pink marbled with white. Very large semi-double. Variegated form of Lady Clare. Vigorous, bushy growth. E-M.   | 4.00*   | 5.00*   | 7.50*   | .....   |
| <b>PAEONIAEFLORA</b> —Creamy-white with a few rose-red stripes and speckles. Very large, loose peony form. Medium, upright growth. E-M.   | 2.00    | 3.00    | 5.00    | 6.50    |
| <b>PAULETTE GODDARD</b> —Red. Very large, semi-double to loose peony form. Vigorous, upright, open growth. M-L.   | 4.00*   | 5.00*   | ....    | .....   |
| <b>PAX</b> —White. Large, flat formal double. A favorite formal white. Medium, upright, compact. M-L.   | 2.50    | 3.50    | 6.00    | 7.50    |
| <b>PEARL MAXWELL</b> —A beautiful, large formal double. Soft pink. A glorified Pink Perfection. Vigorous, compact growth. M-L.  | 5.00*   | 6.50*   | 7.50*   | 10.00*  |
| <b>PINK BALL</b> —Soft pink. Medium large, full peony form. Heavy bloomer. Vigorous, compact, upright. M.   | 2.00    | 3.00    | 5.00    | 6.50    |
| <b>PINK DUCHESS OF SUTHERLAND</b> —Clear pink sport of Duchess of Sutherland. Upright, spreading growth. M.   | 4.00*   | 5.00*   | ....    | .....   |
| <b>PINK PERFECTION</b> —Shell pink. Medium, formal double. Medium, bushy, upright. E-L.   | 1.50    | 2.50    | 5.00    | 6.00    |
| <b>PINK SHADOWS</b> —Another outstanding new camellia developed by Harvey Short. A beautiful, large, semi-double with fimbriated petals. Deep salmon pink with shadows of deeper pink. Medium, upright, compact. E-M. | 7.50*   | ....    | ....    | .....   |



NAGASAKI



FRED SANDER

### VARIETY

|   | SIZES   |         |         |         |
|---|---------|---------|---------|---------|
|   | 12"-18" | 18"-24" | 24"-30" | 30"-36" |
| <b>PINK STAR</b> —Rose-pink. Large, irregular semi-double. Slow, compact, upright growth. M.  | 2.00    | 3.00    | 5.00    | .....   |
| <b>POPE PIUS IX</b> —Rich orange-red. Large, formal double imbricated. Medium, compact, upright growth. M.  | 2.50    | 3.50    | 6.00    | 7.50    |
| <b>PRIDE OF DESCANSO</b> —White. Very large, semi-double to loose peony form. Vigorous, loose, spreading growth. M-L.   | 4.00*   | 5.00*   | 7.50*   | 10.00*  |
| <b>PRIMAVERA</b> (N #105)—A 3½-4 inch full double formal, with a high center, consisting of 55-60 petals. Pure white. Some blossoms show a small petaloid center when fully opened. This seedling first bloomed in 1943, starting its season in February and continuing through April. It is one of the few late blooming varieties that produces good blossoms in the late season. A profuse bloomer with dark green, medium size foliage. | 2.50    | 3.50    | 7.50*   | 10.00*  |
| <b>PRINCE FREDERICK WILLIAM</b> —Large, light pink, formal double of outstanding beauty. Australian import. Upright, bushy. M-L.  | 7.50*   | ....    | ....    | .....   |
| <b>PROF. C. S. SARGENT</b> —Dark red. Medium, full peony form. Vigorous, bushy, upright growth. M.  | 2.00    | 3.00    | 5.00    | 6.00    |
| <b>PURITY</b> —White. Medium-large, formal double showing stamens when fully opened. Vigorous, upright. L.  | 1.50    | 2.50    | 5.00    | 6.00    |
| <b>QUEEN BESSIE</b> —Blush pink. Large, semi-double with wavy petals. Vigorous, upright, compact. M-L.  | 2.00    | 3.00    | 5.00    | .....   |
| <b>RETICULATA</b> (Capt. Rawes)—Brilliant pink. Very large, wavy and fluted petals, semi-double. Upright, open growth. L.   | 5.00*   | 6.00*   | 7.50*   | 10.00*  |
| <b>REV. JOHN BENNETT</b> —Salmon-pink. Very large, semi-double. Medium, bushy, upright. M-L.  | 2.50    | 3.50    | 6.00    | 7.50    |
| <b>RISING SUN</b> —Vivid crimson with red stamens tipped with yellow anthers. Medium-large, single. Medium, bushy, upright. M.  | 4.00*   | 5.00*   | 7.50*   | .....   |



| VARIETY  | SIZES   |         |         |         |
|--|---------|---------|---------|---------|
|  | 12"-18" | 18"-24" | 24"-30" | 30"-36" |
| <b>R. L. WHEELER</b> (U.S. Pat. No. 1137)—A great new camellia that has won more awards than any other. A very large, semi-double to full peony; rose-red with extremely large foliage. (Propagating rights obtained from Central Georgia Nurseries.) E-M.                 | 10.00*  | ....    | ....    | ....    |
| <b>ROOSEVELT BLUES</b> —Purplish-red. Large, semi-double to peony form. Vigorous, loose, upright. M.   | 3.50*   | ....    | ....    | ....    |
| <b>ROOSEVELT BLUES VAR.</b> —Purplish-red blotched with white. Vigorous, loose, upright. M.  | 3.50*   | ....    | ....    | ....    |
| <b>ROSEA PLENA</b> —Rose-pink with dark veins. Large, rose form double. Vigorous, compact, upright growth. E-M.  | 2.50    | 3.50    | 7.50*   | 10.00*  |
| <b>ROSEA SUPERBA</b> —Rose-pink. Very large, rose form double. Vigorous, compact growth. M-L.  | 2.50    | 3.50    | 6.00    | ....    |
| <b>ROSEA SUPERBA VAR.</b> —Very large, rose form double. Rose-pink, marbled white. Vigorous, bushy, compact growth. M-L.   | 4.00*   | 5.00*   | 7.50*   | ....    |
| <b>RUTH ROYER</b> —Pink, heavily marked white sport of Duchess of Sutherland. Vigorous, upright, spreading growth. M.  | 7.50*   | ....    | ....    | ....    |
| <b>SARA-SA</b> —Flesh pink, spotted and striped with darker pink. Large, semi-double. Vigorous, upright, open growth. M.   | 2.50    | 3.50    | 6.00    | 7.50    |
| <b>SCENTED TREASURE</b> —This fine new seedling, developed by Harvey Short, is a 3 to 4 inch full double, peony form. Deep cherry-red blossoms that have the spicy fragrance of English Pinks. Profuse and extremely early season of bloom. Medium, upright, compact. E-M. | 5.00*   | ....    | 12.50*  | ....    |
| <b>SEN. DUNCAN U. FLETCHER</b> —Rose-red. Large, irregular semi-double to peony form. Medium, upright, compact. M-L.   | 2.50    | 3.50    | 6.00    | 7.50    |



MAGNOLIAFLORA



EMPEROR  
WILHELM

| VARIETY  | SIZES    |         |         |         |
|--|----------|---------|---------|---------|
|  | 12"-18"  | 18"-24" | 24"-30" | 30"-36" |
| <b>SHIN AKEBONO</b> —Pale pink. Large, single to semi-double. Medium, loose, spreading growth. E-M.  | 4.00*    | 5.00*   | 7.50*   | 10.00*  |
| <b>SHIRO CHAN</b> —This new variety is destined to become America's favorite white anemone form camellia. Developed by Domoto's Nursery, this beautiful white sport of C. M. Wilson shows an occasional blush pink at the base of the petaloids. Same habit of growth and blooming season as its parent. | \$12.50* | ....    | ....    | ....    |
| <b>SHIRO TAMA</b> —White. Medium-large, rose form double. Vigorous, loose, upright growth. M.  | 2.50     | 3.50    | 6.00    | 7.50    |
| <b>SIERRA SPRING</b> —Bright pink heavily mottled with white. Large, semi-double. Vigorous, upright growth. M.   | 4.00*    | 5.00*   | 7.50*   | 10.00*  |
| <b>SMILING BEAUTY</b> —Delicate pink. Medium-large, semi-double. Medium, upright, compact. M.  | 4.00*    | 5.00*   | 7.50*   | ....    |
| <b>S. PETER NYCE</b> —New. A beautiful predominantly white sport of Nagasaki. Winner of Best Flower Award in Southern California Camellia Society Show 1952. Slow, spreading, bushy growth. M.   | 7.50*    | ....    | ....    | ....    |
| <b>SPRING SONNET</b> —New. Outstanding pale pink sport of Herme. Growth and blooming season same as parent.  | 7.50*    | ....    | ....    | ....    |
| <b>SWEET DELIGHT</b> —Rose-pink. Semi-double to peony form. Fragrant, vigorous, loose, upright growth. M.  | 4.00*    | ....    | ....    | ....    |
| <b>SWEET VERA</b> —Flesh pink mottled white with deeper pink speckles. Large, peony form. Vigorous, bushy growth. M.   | 2.50     | 3.50    | 6.00    | ....    |
| <b>SWEET SIXTEEN</b> —Pale pink. Large, irregular semi-double. Medium, compact growth. M.  | 4.00*    | 5.00*   | 7.50*   | ....    |
| <b>ST. ANDRE</b> —Brilliant red. Very large, semi-double to anemone form. Medium, compact, broad growth. M-L.  | 4.00*    | 5.00*   | 7.50*   | ....    |
| <b>TALLAHASSEE GIRL</b> —Large, semi-double to loose peony form. Very soft pink. Vigorous, upright growth. E-M.  | 4.00*    | 5.00*   | 7.50*   | ....    |
| <b>THELMA DALE</b> —Silvery-pink. Large, semi-double to rose form double. (Sport of Mrs. Baldwin Wood.) M.   | 5.00*    | 6.00*   | 7.50*   | ....    |
| <b>THOMAS D. PITTS</b> (N #144)—A new white formal double that we are proud to offer for the first time. This camellia, along with its full white blossoms, has beautiful, deep green foliage, and vigorous, bushy, upright growth. Blooms heavily from midseason to late.                               | 4.00     | 5.00    | 7.50    | 10.00   |
| <b>TINSIE</b> —Bright red outer guard petals with white peony center. Vigorous, open, upright growth. M.   | 4.00*    | ....    | ....    | ....    |
| <b>T. S. CLOWER, JR.</b> —A beautiful new white, striped pink, large, rose form double. Vigorous, loose, upright growth. M.  | 5.00*    | 6.00*   | 7.50*   | 10.00*  |
| <b>VASHTI</b> —One of the best midseason to late blooming camellias. Medium size, rose form to full double. White blotched and striped pink. Medium, compact, upright growth. M-L.   | 4.00*    | 5.00*   | 7.50*   | ....    |
| <b>VEDRINE</b> (Ruby Glow)—Ruby-red. Large, semi-double to loose peony form. Vigorous, upright, spreading growth. E-M.   | 2.50     | 3.50    | 6.00    | 7.50    |
| <b>VICTORY WHITE</b> —White. Large, semi-double peony form. Vigorous, upright, open growth. M.   | 2.50     | 3.50    | 6.00    | ....    |
| <b>VILLE DE NANTES VAR</b> —Dark red, blotched with white. Large, irregular semi-double with edges of petals fimbriated. Slow, bushy growth. M.  | 4.00     | 5.00    | 7.50*   | 10.00*  |



| VARIETY   | SIZES   |         |         |         |
|---|---------|---------|---------|---------|
|   | 12"-18" | 18"-24" | 24"-30" | 30"-36" |
| <b>VIRGIN'S BLUSH</b> —Blush white. Medium, semi-double to peony form. Vigorous, upright, open growth. M.   | 2.50    | 3.50    | 7.50*   | 10.00*  |
| <b>WARD'S DAIKAGURA</b> —Heavily mottled with white strain of Daikagura. Growth and blooming season same as Daikagura.  | 5.00*   | ....    | ....    | ....    |
| <b>WARRIOR</b> (N #107)—A 4-4½ inch semi-double to full peony form, brilliant, dark red with golden stamens. Approximately 25 large, round, wavy guard petalae with golden stamens and small petals intermixed in center of flower. Foliage, light green, medium size. An upright grower. Blooms early to mid-season. | 4.00    | 5.00    | ....    | ....    |
| <b>WHITE EMPRESS</b> —White. Very large, irregular semi-double. Vigorous, upright growth. E-M.  | 4.00*   | 5.00*   | 7.50*   | ....    |
| <b>WHITE GIANT</b> —White. Very large, semi-double. Vigorous, compact, upright growth. M.   | 4.00*   | 5.00*   | ....    | ....    |
| <b>YOHEI HAKU</b> —White to creamy white, often tinted blush pink. Large, spreading growth. E-L.  | 5.00*   | 6.00*   | ....    | ....    |
| <b>YVONNE TYSON</b> —A new large, salmon pink, large anemone form. Medium, compact growth. M-L.   | 7.50*   | ....    | ....    | ....    |

The following Yunnan Province Reticulata Camellias have caused great comment and interest wherever shown. Their beautiful blooms and open, graceful habit of growth make them distinct and unsurpassed in the world of camellias. All are still in very limited quantity.

## RETICULATA CAMELLIAS

**BUTTERFLY WINGS**—6 inch rose-pink blossoms, with large, wavy petals. Slender, open growth. M-L.  
12"-18" grafts \$10.00; 3-year 24"-30" grafts \$20.00

**CHANGS TEMPLE**—Extremely large, brilliant pink, variegated semi-double. Vigorous, compact growth. M-L.  
12"-18" grafts \$10.00; 3-year 24"-30" grafts \$20.00

**CHRYSANTHEMUM PETAL**—Full double, imbricated pink, about 4 inches in diameter, with each petal fluted. Slender, open growth. M.  
12"-18" grafts \$10.00

**CORNELIAN**—Very large, deep rose, heavily marbled with white, semi-double, with wavy petals, and small petaloids in center. Medium, bushy growth. M-L.  
12"-18" grafts \$10.00

**CRIMSON ROBE**—Very large, semi-double, carmine red. Petals are crepe textured, wavy and crinkled. Large foliage. Vigorous, upright, bushy. M-L.  
12"-18" grafts \$10.00; 3-year 24"-30" grafts \$20.00

**LION HEAD**—Very large, semi-double, deep red, with each petal heavily variegated white. Vigorous, compact growth. M-L.  
12"-18" grafts \$10.00; 3-year 24"-30" grafts \$20.00

**NOBLE PEARL**—A 6-inch semi-double flower, with large, beautifully textured petals, deep red. Slow, compact growth. L.  
12"-18" grafts \$10.00

**OSMANTHUS LEAF**—Medium size, rose-form double of unusual orchid-pink color. Small foliage. Vigorous, slender, open growth. M-L.  
12"-18" grafts \$10.00

**PAGODA**—Light red flowers, similar in form to Purple Gown, but more double, though small in diameter. Medium, compact growth. M-L.  
12"-18" grafts \$10.00; 3-year 24"-30" grafts \$20.00

**PROFESSOR TSAI**—Large, rose-pink, semi-double with loose petal arrangement. Open, spreading growth. M-L.  
12"-18" grafts \$10.00

**PURPLE GOWN**—A 5 to 7 inch formal to peony form, deep purple-red with white variegation. Beautiful. Slow, compact growth. M-L.  
12"-18" grafts \$10.00

**SHOT SILK**—Brilliant pink, semi-double flowers, with loose, wavy petals informally arranged. Vigorous, upright, compact growth. M-L.  
12"-18" grafts \$10.00; 3-year 24"-30" grafts \$20.00

**TALI QUEEN**—Deep pink, lightly variegated with white; 6 inches or more in diameter. Large, heavily textured petals. Slow, compact growth. L.  
12"-18" grafts \$10.00

**WILLOW WAND**—Large, orchid-pink, formal double blossoms opening to semi-double, with wavy petals. Vigorous upright growth. M-L.  
12"-18" grafts \$10.00; 3-year 24"-30" grafts \$20.00



# SASANQUA CAMELLIAS

In the past few years the Sasanqua has at last been gaining the added popularity it rightfully deserves. Its hardiness, early and profusion of bloom (September to January), small, dark evergreen foliage make it a valuable addition to our landscape. Sasanquas thrive in full sun or a partially shaded area and may be used as hedges, ground covers, vines or specimens. Care and culture of the Sasanqua is identical to that of the Japonica.



JEAN MAY



HANA JIMAN

## VARIETY

|   | SIZES   |         |                |
|---|---------|---------|----------------|
|   | 12"-18" | 18"-24" | 24"-30"        |
| <b>BRILLIANCY</b> —Bright rose-pink. Very compact. Single.  | 3.00    | 4.00    | ....           |
| <b>CHARMER</b> —New. Single white, edge salmon pink. Large. Upright open growth.  | 5.00*   | ....    | ....           |
| <b>CHOJI-GURUMA</b> —Full anemone form, rose-pink with lighter pink petaloids. Upright growth.                                  | 4.00*   | 5.00*   | 7.50*          |
|   |         |         | 30"-36"—10.00* |
| <b>CLEOPATRA</b> —Rose-pink. Semi-double to peony type. Very compact.   | 2.50    | 3.50    | ....           |
| <b>DAWN</b> —Beautiful single to semi-double, ivory white with blush pink at the margins of petals. Upright and compact growth. | 3.00    | 4.00    | ....           |
| <b>FLORIBUNDA</b> —Single white, edged lavender pink. Vigorous, upright and compact.  | 3.00    | ....    | ....           |
| <b>GIN-NO-SAE</b> —Small, creamy white, full anemone form. Spreading growth.  | 4.00*   | 5.00*   | ....           |
| <b>HANA JIMAN</b> —Large single white, tipped with pink. Fluted petals. Vigorous, upright and compact.                          | 4.00*   | 5.00*   | 7.50           |
| <b>HINODEGUMA</b> —Large, single white with pink edge. Vigorous, upright, bushy growth.   | 4.00*   | 5.00*   | 7.50*          |
| <b>HINODE-NO-UMI</b> —New. Very beautiful. Large, flat single. Deep crimson. Profuse bloomer. Upright, compact.                 | 5.00*   | ....    | ....           |
| <b>HIODOSHI</b> —Single crimson, beautifully marbled white. Compact, slow grower.   | 4.00*   | ....    | ....           |
| <b>HIRYO</b> —Deep crimson-red. Double. Vigorous, upright open growth.  | 4.00*   | ....    | ....           |



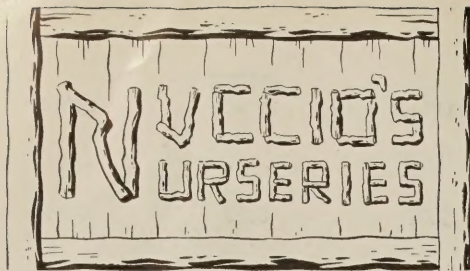
| VARIETY  | SIZES   |         |         |
|--|---------|---------|---------|
|  | 12"-18" | 18"-24" | 24"-30" |
| <b>HIRYO-NISHIKI</b> —Variegated white form of Hiryo.  | 4.00*   | ....    | ....    |
| <b>HUGH EVANS</b> —Profuse bloomer. Single pink. Vigorous, upright and compact.  | 2.00    | 3.00    | 6.00    |
| <b>JEAN MAY</b> —This outstanding new Sasanqua will soon become the favorite of all because of its glossy foliage and compact, upright habit of growth. Large, shell pink, double blossoms. Excellent. | 5.00*   | 6.00*   | 7.50*   |
| <b>KOWGOYOKU</b> (Little Gem)—Small, full formal double, white with edge of petals slightly marked with pink. Upright, compact.  | 4.00*   | 5.00*   | 7.50*   |
| <b>LAVENDER QUEEN</b> — Large, single, lavender-pink. Vigorous, loose, spreading growth.   | 3.00    | 4.00    | 7.50*   |
| <b>MOMOZONO NISHIKI</b> —Single, pale pink, shading to rose-red border. Vigorous, upright, bushy growth.   | 4.00*   | 5.00*   | 7.50*   |
| <b>NARUMIGATA</b> —Single white, shaded with pink. Very large. Compact, vigorous, upright.   | 4.00*   | 5.00*   | 7.50*   |
| <b>NODAMI USHIRO</b> — Large, deep pink, semi-double. Vigorous, compact growth.  | 4.00*   | 5.00*   | 7.50*   |
| <b>OCEAN SPRINGS</b> —A large single white with petals edged with crimson. Very beautiful. Medium, bushy growth.   | 4.00*   | 5.00*   | 7.50*   |
| <b>PAPAYER</b> —Large, single, bell shaped. Soft pink. Slender, upright growth.  | 4.00*   | ....    | ....    |
| <b>PINK SNOW</b> —A clear, light pink anemone with vigorous, low spreading growth. New.  | 5.00*   | ....    | ....    |
| <b>ROSY MIST</b> —Large, single, delicate soft pink. Spreading growth.   | 4.00*   | 5.00*   | ....    |
| <b>SETSUGEKKA</b> —A large single to semi-double white with ruffled petals that are slightly marked with pink at edges. Vigorous, upright.   | 4.00*   | ....    | ....    |
| <b>SHISHI GASHIRA</b> —Double, bright rose-red. Slow, low and compact.   | 4.00*   | 5.00*   | ....    |
| <b>SHISHIFUKUJIN</b> —Very large, clear, soft pink. Single to semi-double. Upright, bushy growth.  | 4.00*   | 5.00*   | 7.50*   |
| <b>SHOWA-NO-SAKAE</b> —Semi-double to peony. Soft pink. Slow, low and compact. 30"-36"—\$7.50.   | 2.50    | 3.50    | 6.00    |
| <b>SNOWFLAKE</b> —Beautiful, flat, large-petaled single white, with large, deep green foliage. Vigorous, upright, bushy.   | 4.00*   | ....    | ....    |
| <b>TAIMI-NISHIKI</b> —Single, pale pink mottled white. Open, vigorous growth.  | 4.00*   | 5.00*   | ....    |
| <b>VERISCOLOR</b> —Single pink with white center and lavender edge. Upright, compact.  | 4.00*   | ....    | ....    |
| <b>WHITE DOVE</b> —White, semi-double to loose peony form. Vigorous, spreading grower.   | 2.50    | 3.50    | 6.00    |
| <b>WHITE QUEEN</b> —Large, single white with showy stamens. Open, upright growth.  | 4.00*   | 5.00*   | 7.50*   |
| <b>WILLOW LEAF</b> — Single white, margined with pink. Upright, spreading growth.  | 2.50    | 3.50    | ....    |
| <b>YAE ARARE</b> —Beautiful, large single white with petals tipped pink. Vigorous, bushy, upright growth.  | 4.00*   | 5.00*   | 7.50*   |

\* An asterisk after the prices denotes grafted plants



SWEENEY, KRIST & DIMM, HORTICULTURAL PRINTERS, PORTLAND, OREGON





3555 Chaney Trail, Altadena, California

Telephone: SYcamore 4-3383

POSTMASTER: Form 3547 Requested.

Library  
U. S. Dept. of Agriculture  
Washington 25, D. C.



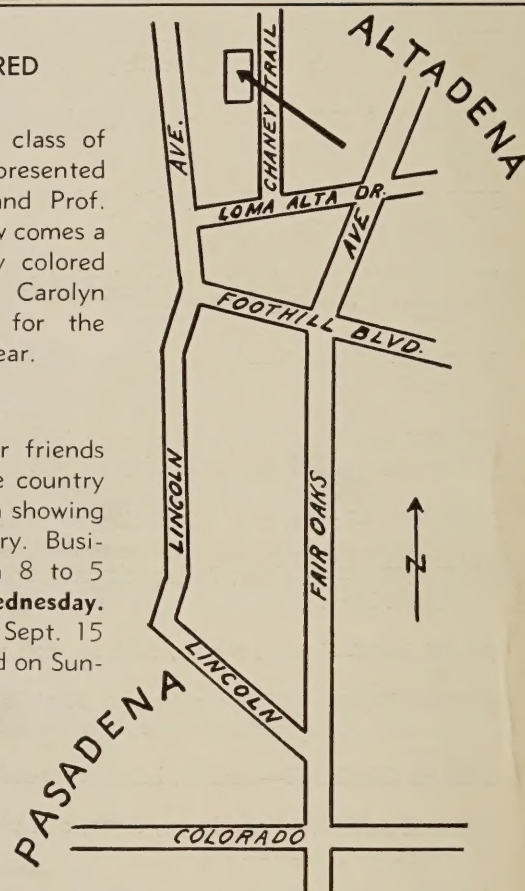
CAROLYN TUTTLE

### PEONY-FLOWERED CAMELLIAS

To this popular class of camellias as represented by Debutante and Prof. C. S. Sargent now comes a new and warmly colored rose-opal pink, Carolyn Tuttle, offered for the first time this year.

### COME VISIT US!

We welcome our friends from all over the country and take pride in showing them our nursery. Business hours from 8 to 5 daily **except Wednesday**. From June 1 to Sept. 15 we are also closed on Sundays.



DEBUTANTE



PROF. C. S. SARGENT